
International Clinical Fellowships and Observerships

World leaders in heart and lung surgery

From Royal Brompton & Harefield Hospitals · London



RB&HH
SPECIALIST CARE

WORLD RENOWNED SPECIALISTS IN HEART AND LUNG DISEASE

Royal Brompton & Harefield Hospitals Specialist Care are known throughout the world for our expertise, standard of care and research breakthroughs. Our hospitals offer a wide range of treatments and advanced diagnostics for all aspects of heart and lung disease.

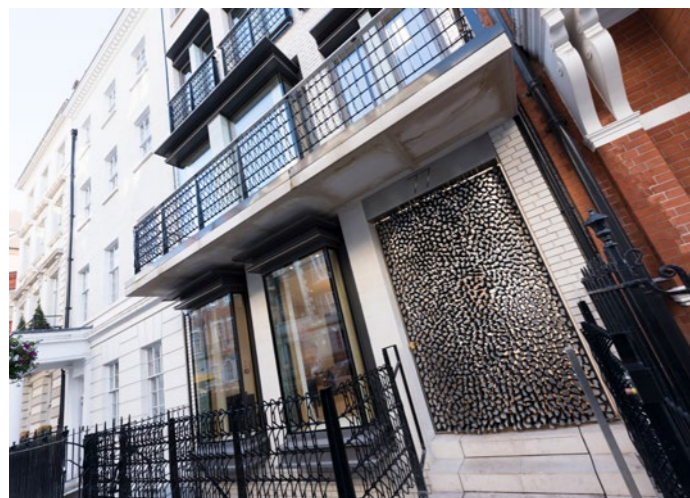
Our focus is to provide the very best care for patients of all ages with heart and lung disease. This means our consultants and healthcare staff are experts in their chosen field, many having moved here from across the globe, to practice their skills surrounded by the very best in their profession.

With first-class private facilities across two London based NHS teaching hospitals and a state-of-the-art diagnostics centre, we combine dedicated private care with the very best expertise and most advanced facilities available. As such, Royal Brompton and Harefield Hospitals consultants carry out some of the most complicated surgeries in the world and have pioneered medical breakthroughs such as performing the first heart and lung transplant and discovering the first genetic mutation responsible for dilated cardiomyopathy.

The two hospitals comprise the largest post-graduate specialist heart and lung centre in the United Kingdom. Our commitment to training, education and research partnerships with respected institutions such as Imperial College School of Medicine and the National Heart and Lung Institute help us to drive up international standards of medical care, benefiting patients and clinical staff alike. This has established an international reputation for innovation and leadership in research, treatment and education in heart and lung disease.

In this booklet you will find an outline of the range of clinical fellowship programmes, clinical observership programmes as well as training opportunities that we offer to overseas physicians.

Fees are applicable to all education and training programmes offered by the Trust. Further information is available upon request.



▲
Outpatients & Diagnostics facility
at 77 Wimple Street



▲
Harefield Hospital
spacious private in-patient rooms



A world of opportunities

Royal Brompton and Harefield Hospitals NHS Foundation Trust provide a range of programmes designed to share our world-renowned expertise with overseas consultants.

International clinical fellowship and observership programmes

We offer intensive clinical education programmes to overseas physicians wishing to further develop their expertise in certain interventional specialities. Our programmes are designed to help training clinicians integrate into the team so they can maximise their learning outcomes and meet development needs.

The bespoke international programmes are typically tailored to the physician's level of expertise, their development goals and current available opportunities within the hospitals.

Those who have General Medical Council registration will have access to the clinical fellowship programme. Fellowship programmes can range between two to six months.

Applicants without General Medical Council registration will have the opportunity to apply for the clinical observership programme. The duration of this programme can vary depending on the development goals.

Clinical Observerships

The observership programme offers training clinicians the opportunity to take part in observation or practice experiences in clinical care. The programme is tailored to help build the observer's experience in line with personal learning objectives.

All observerships without General Medical Council registration will require full supervision. When supervised the training observer will be able to:

- Take clinical history under supervision
- Contribute to the examination of a patient and the discussion on diagnosis
- "Scrub up" in theatre. Involvement will strictly be limited to educational purposes only and not for service
- Participate in non-invasive, low risk external imaging



Back home we don't have such a variety of congenital heart disease cases on the wards, I have only seen textbook examples. This is a chance I never imagined I would have, so thank you Royal Brompton Hospital.

Dr Aliah Khesroh

*Clinical Fellowship Program in Adult Congenital Heart Disease
From Kuwait*



*Mr Valdimir Anikin,
Consultant thoracic surgeon*

Clinical fellowships

All fellowship programmes undertaken at Royal Brompton and Harefield Hospitals must adhere to the standards set out by the UK's General Medical Council. The fellowship programme includes:

- One-to-one mentoring from a Royal Brompton and Harefield Hospitals consultant
- Access and participation in clinical rounds and lectures
- Potential to assist with surgical procedures in the operating theatre
- Possible integration with Imperial College School of Medicine research

Clinical fellowship requirements

The clinical fellowship programme is open to international applicants and linked to the Medical Training Initiative scheme of the Royal College of Physicians of London. There is a minimum English language requirement, currently an IELTS score of 7.5 as fellows will join the training programme for UK residents. There will be a written component to teaching modules led by a course tutor. As demand for the clinical fellowships are extremely competitive, places will be allocated by interview and panel review.

Clinical fellows with General Medical Council registration can find out more information by referring to the Medical Training Initiative Guide provided by The Academy of Medical Royal Colleges at www.aomrc.org.uk/mti/medical-training-initiative

Both clinical fellowships and clinical observerships programmes will have access to:

- One-to-one mentoring from a Royal Brompton and Harefield Hospitals consultant
- Participation in clinical rounds and lectures
- Dedicated programme coordinator

Areas of specialism

Fellowship and observership programme specialisms include, but are not limited to: respiratory and critical care, adult congenital heart disease, cardiology, cardiac surgery, thoracic surgery and paediatric respiratory medicine.



This is my first experience of cardiac MRI at the Royal Brompton Hospital and thanks to the wonderful professors, I really enjoyed it. This could be a changing point in my life as I could go on to specialise in cardiac MRI.

*Dr Faisal Abdul Aziz Al Roumi
Clinical Fellowship Programme in CMR
From Kuwait*



▲
Dr Khesroh and Dr Al Roumi with RB&HH's Managing Director David Shrimpton and Business Development Manager Ruku Bibi



OTHER OPPORTUNITIES

Royal Brompton and Harefield Hospitals clinicians regularly travel internationally to lecture and share their knowledge. Many of them hold prominent positions on international boards, committees, institutions and professional associations.

Visiting doctor programme

Our consultants are committed to broadening overseas teams' clinical knowledge. They actively participate in the Royal Brompton and Harefield Hospitals visiting doctor programme to share their expertise and develop local teams' clinical skills.

Following an invitation from the local hospital, our consultant will undertake a short visit. During this time, they may be expected to work alongside local consultants, share clinical knowledge, hold outpatient clinics, operate on any appropriate cases, participate in clinical discussions and/or undertake lectures.

Sharing best practice and collaboration

Royal Brompton and Harefield Hospitals have a strong interest in helping other hospitals and healthcare providers develop best practice in key clinical areas. Our clinicians would look to transfer knowledge in core clinical operational areas such as operating theatres, catheter labs and intensive care, to lead clinicians in-county, helping the teams achieve best practice and develop their own centres of excellence.

Interested in any of the programmes or have questions?

If you would like to discuss any of the specific opportunities or want to find out information about other training programmes we offer, please contact:

Tel: +44 (0)20 7351 8116

Email: privatepatients@rbht.nhs.uk

Visit: www.rbhh-specialistcare.co.uk/fellowships

For regular RB&HH Specialist Care updates watch our educational videos at www.rbhh-specialistcare.co.uk/fellowships or follow our social media pages.

@RBHHPrivateCare

@RBHHSpecialistCare

@RBHHprivatecare

Royal Brompton and Harefield Specialist Care



Royal Brompton & Harefield 
NHS Foundation Trust

Royal Brompton Hospital
Sydney Street
London SW3 6NP
Tel: +44(0)20 3131 0535
Fax: +44(0)20 7351 8535

Harefield Hospital
Hill End Road
Harefield UB9 6JH
Tel: +44(0)20 3131 6858
Fax: +44(0)20 7351 8535

RB&HH Specialist Care
Outpatients and Diagnostics
77 Wimpole Street
London W1G 9RU
Tel: +44(0)20 3131 0535
Fax: +44(0)20 7351 8535

www.rbhh-specialistcare.co.uk
